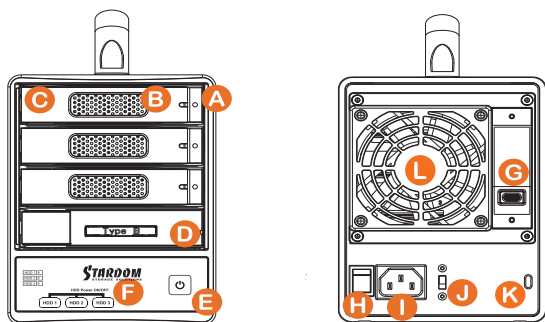


## ST4F-B32/ST4F-BA32/ST4F-B32A 快速安裝導引

### 產品示意圖與配件表

前視圖

背視圖



- |                       |                         |        |
|-----------------------|-------------------------|--------|
| A 硬碟存取燈號              | F 硬碟獨立電源觸控開關            | K 防竊鎖孔 |
| B 硬碟抽取盒頂針孔            | G USB 3.2 Gen2 Type-C 埠 | L 風扇   |
| C 硬碟抽取盒把手             | H 電源總開關                 |        |
| D CFexpress Type B 插槽 | I 電源插座                  |        |
| E 電源觸控開關              | J 風扇轉速切換按鈕              |        |

打開包裝外盒後，包裝內容應包含以下組件：

ST4F產品本體x1(內含抽取盒x4)		
USB 3.2 C to C連接線x1 (for ST4F-BA32 / ST4F-B32)	電源線x1	
USB 3.2 C to A連接線x1 (for ST4F-BA32 / ST4F-B32A)		
把手x1	快速安裝導引x1	螺絲及頂針

- 請先確認相關配件與產品本身是否有受損或是缺少配件，若有任何疑問，請與您的經銷商或業務人員聯絡。
- 請前往官網 ([www.stardom.com.tw](http://www.stardom.com.tw)) 下載使用者說明書。



1

V1.0 (APR. 2023)

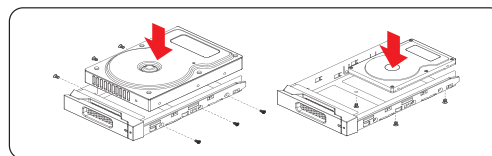
### 指示燈燈號說明

狀態	硬碟	硬碟狀態顯示燈
無硬碟	HDD1	紅燈恆亮
	HDD2	紅燈恆亮
	HDD3	紅燈恆亮
	CFE	紅燈恆亮
硬碟閒置	HDD1	藍燈恆亮
	HDD2	藍燈恆亮
	HDD3	藍燈恆亮
	CFE	藍燈恆亮
硬碟格式化	HDD1	藍燈閃爍
	HDD2	藍燈閃爍
	HDD3	藍燈閃爍
	CFE	藍燈閃爍

### 硬體安裝

請參照下列步驟，完成 ST4F 的硬體安裝：

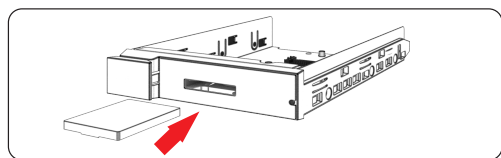
- 將主機置放於平穩空間上，並確認散熱風扇沒有被擋住，且四周有適當的散熱空間。(請避免接近水源或是其他容易造成產品損傷的環境)
- 請使用配件中所附的頂針插入硬碟抽取盒頂針孔，開啟硬碟抽取盒把手便將抽取盒取出。
- 安裝 3.5 吋硬碟，請使用 6 顆零件包內附的大顆螺絲加以固定；安裝 2.5 吋硬碟，請使用 4 顆零件包內附的小顆螺絲加以固定。
- 硬碟安裝完成後，請將抽取盒平移放入主機內，並關上把手。
- CFexpress Type B 記憶卡 插進 插槽。



2

### 產品使用注意事項

- 當您需要關閉或移除 ST4F或某顆硬碟時，務必透過您所操作的作業系統中執行硬碟安全移除後，方進行電源關閉的動作。
- 強烈建議除了使用ST4F的資料儲存功能外，請針對重要資料備份到另一個儲存裝置上或遠端備份，雙重備援您重要的資料。若您儲存在 ST4F的資料損毀或遺失，STARDOM 將不負任何的責任。備援您重要的資料。



- 將電源線與 ST4F 連接，再將電源線與電源插座連接。
- 視需求選擇配件中對應的 (USB)連接線，再分別接到電腦與 ST4F相關連接埠。
- 透過前方的觸控按鈕來操作JBOD 外接盒。(請參考「前面板操作」)

### 前面板操作



長按3秒，即可開關單一硬碟

使用者可經由面板進行 硬碟開/關操作。

- 開啟後端的「電源總開關」後，即可透過前端的「電源觸控開關」來開啟/關閉ST4F。
- ST4F開啟後，電腦端應可識別到四顆獨立硬碟，請依照作業系統指示完成格式化後即可正常使用。
- 使用過程中，若暫不需要使用到某顆硬碟，可透過相對應的「硬碟電源觸控開關」來關閉該硬碟電源，以達省電效果。後續若需要使用到該硬碟時，一樣只需透過相對應的「硬碟電源觸控開關」即可開啟該硬碟電源。
- 即使已單獨關閉某顆硬碟電源，若透過前端的「電源觸控開關」或後端的「電源總開關」來關閉ST4，則下次啟動時，四顆硬碟的電源都會恢復成開啟狀態。

3

感謝您使用 銳鉸科技股份有限公司 的產品。

本手冊裡的資訊在出版前雖然已經被詳細確認，但實際產品規格將已出貨時為準；任何的產品規格或相關資訊更新，請您直接上 [www.STARDOM.com.tw](http://www.STARDOM.com.tw) 網站查詢，或直接與您的業務聯絡窗口聯繫，本公司將不另行通知。

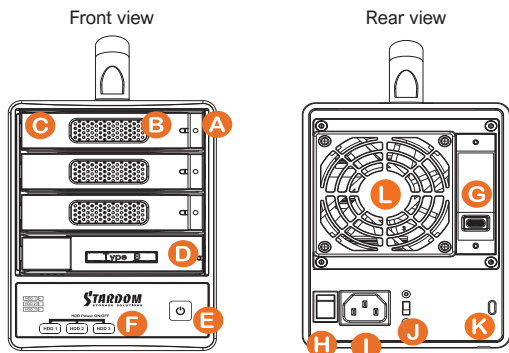
如果您對 銳鉸科技 的產品有任何疑問，或是想獲得最新產品訊息、使用手冊或軟體，請您聯絡 [services@stardom.com.tw](mailto:services@stardom.com.tw)，我們將儘速回覆您。

STARDOM 為 銳鉸科技股份有限公司 旗下品牌之一  
本說明相關產品內容歸 銳鉸科技股份有限公司 版權所有

4

## ST4F-B32/ST4F-BA32/ST4F-B32A Quick Installation Guide

### Package Contents and Product Views



- |                             |                             |
|-----------------------------|-----------------------------|
| A HDD access light          | G USB 3.2 Gen 2 Type-C port |
| B HDD enclosure pin release | H Main power switch         |
| C HDD enclosure handle      | I Power socket              |
| D CFexpress Type B Slot     | J Fan speed switch          |
| E Touch power switch        | K Anti-theft lock           |
| F HDD touch power switch    | L Fan                       |

Open the package and you should find the following :

ST4F product x 1 ( with removable drive tray enclosed x4)		
USB 3.2 C to C Cable x 1 (for ST4F-BA32 / ST4F-B32)	Power Cable x1	
USB 3.2 C to A Cable x 1 (for ST4F-BA32 / ST4F-B32A)		
Handle x1	Quick Installation Guide x1	Screws & Ejector pins

- Please check the included parts and the product itself for any damage or missing parts. If you have any questions, please contact the retailer or sales representative.
- Please download the user manual from the official website ([www.stardom.com.tw](http://www.stardom.com.tw))



1

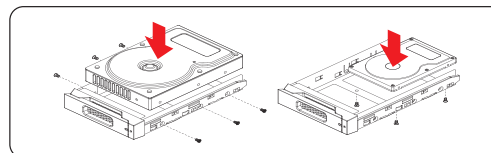
V1.0 (APR. 2023)

### Visual Status Indicator Definitions

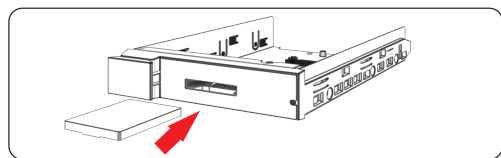
Status	HDD	System status light
No HDD	HDD 1	Red light always on
	HDD 2	Red light always on
	HDD 3	Red light always on
	CFE	Red light always on
Disk Idle	HDD 1	Blue light always on
	HDD 2	Blue light always on
	HDD 3	Blue light always on
	CFE	Blue light always on
Disk Format	HDD 1	Blue light flashing
	HDD 2	Blue light flashing
	HDD 3	Blue light flashing
	CFE	Blue light flashing

### Hardware Installation

- Place the system on a stable surface. Ensure that it is well ventilated without blockage to the vent and kept away from areas near water and damage prone areas.
- Use the ejector pin included in the accessory kit and inserted into the pin release opening to eject the removable drive tray latch and extract the removable drive tray.
- For 3.5" HDD/SSD, please secure it by use six the larger screws included in the accessory kit. For 2.5" HDD/SSD, please secure it by use four the smaller screws included in the accessory kit.
- When the hard drive installation has been completed, insert the hard drive tray into the system horizontally and secure the latch into place.
- Put CFexpress Type B memory card into slot.

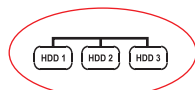


2



- Connect the power cable to the ST4F, and then plug the power to the wall socket. Boot-up the unit.
- Select the corresponding (USB) cable from an accessory and connect it to the computer and the ST4F relevant port respectively.
- Using the buttons on the front to turn on /off HDD (please refer to section 5 for front panel and LCD information).

### Description of Front Operation



Press for 3 seconds to turn on and off a single hard drive.

- After turning on the "main power switch" at the rear side, you can turn on/off the ST4F through the "touch power switch" at the front panel.
- After the ST4F is turned on, the computer should be able to recognize the four independent hard disks. Please follow the operating system's instructions to complete the format process and then the disks should be ready to use it.
- If you do not need to use one or more disks temporarily, you can turn the disk off through the corresponding "hard disk touch power switch" to save power. And then use the same switch to turn on the disk if you need to use it.
- Even if one or more disks has been individually powered off, if the ST4F is turned off through the "touch power switch" or the "main power switch", next time when ST4F is turned on again, the power of the four disks will return to the on state.

3

### Important Notice

- When you need to turn off or remove the ST4F or a certain hard drive, be sure to perform the safe removal of the hard drive through the operating system you are operating before turning off the power.
- It is highly recommended for users to back up important data contained within the ST4F unit on a regular basis or whenever the user feels necessary to a remote or a separate storage device. Stardom will not be responsible for any lost of data caused during the use of the unit or the recovery of the data lost.

Thank you for choosing STARDOM's product.

The information provided in this manual was checked before publication, but the actual product specifications may have changed before shipping; Latest product specifications and updates can be found at [www.STARDOM.com.tw](http://www.STARDOM.com.tw) or through your sales representative. No separate notifications will be provided by our company.

If you have any questions about RAIDON products or would like to receive the latest product information, instruction manuals, or firmware, please contact [services@stardom.com.tw](mailto:services@stardom.com.tw) for assistance.

STARDOM is one brand under RAIDON TECHNOLOGY, INC.  
All product-related content in this manual are copyrighted by  
RAIDON TECHNOLOGY, INC.

4